

HLA Cash Fund (HLACF)

May 2019

Fund Features

1. Investment Objective

This fund aims to provide high principal security and consistent return to the investors by investing in money market instrument. Returns will be comparable to prevailing overnight policy rates but correspondingly, the risks will be significantly lower than that for equities investment.

2. Investment Strategy & Approach

This fund may be placed with any licensed financial institution under the Islamic Financial Services Act 2013, determined by the fund manager.

3. Asset Allocation

This fund may be placed with any licensed financial institution under the Islamic Financial Services Act 2013, determined by the fund manager.

4. Target Market

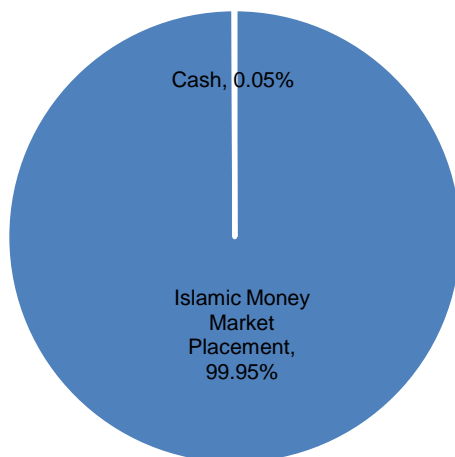
This fund is suitable for investors who are low risk profile.

Fund Details

Unit Price (28/5/2019)	: RM1.2272
Fund Size (28/5/2019)	: RM39.2mil
Fund Management Fee	: 0.25% p.a.
Fund Manager	: Hong Leong Assurance Berhad
Fund Category	: Money Market Fund
Fund Inception	: 28 Dec 2010
Benchmark	: Overnight Policy Rate
Frequency of Unit Valuation	: Weekly

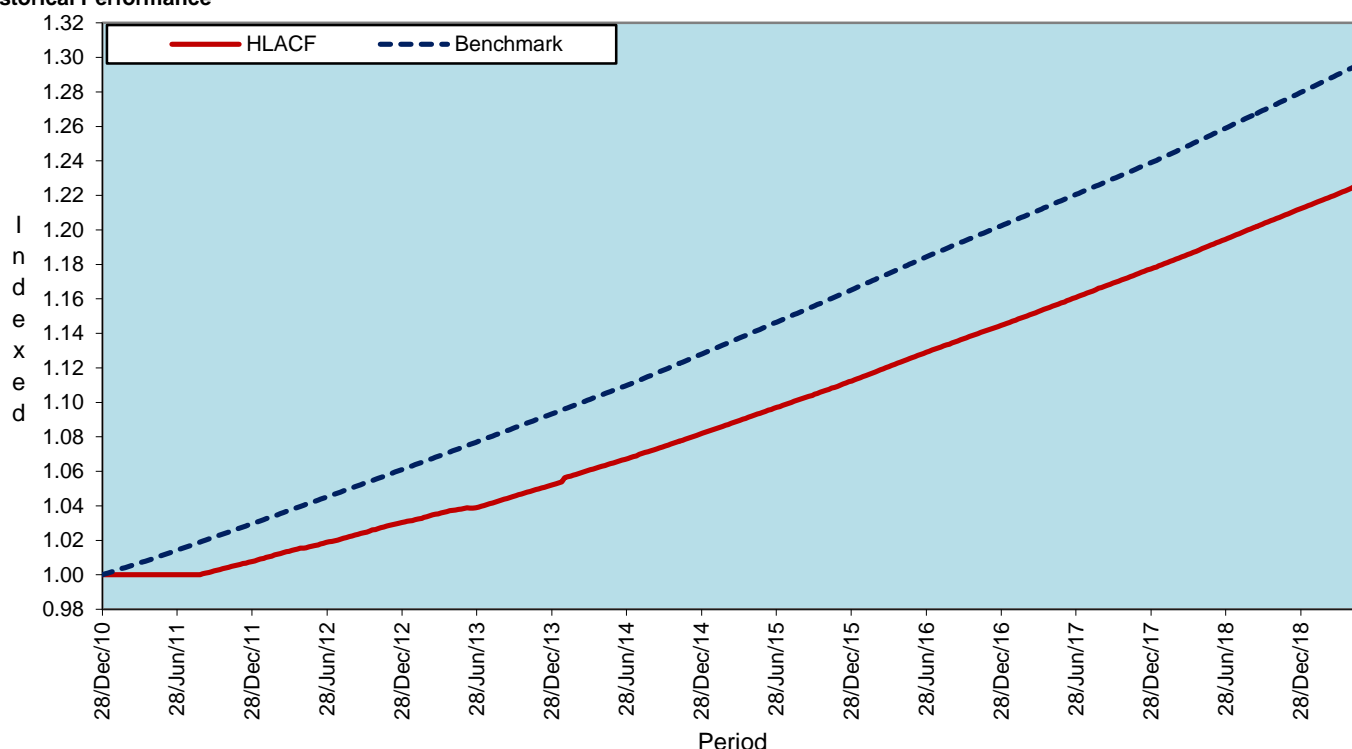
The Company reserves the right to change the Fund Management Fee (% p.a.) by giving the Policy Owner ninety (90) days prior written notice.

Asset & Sector Allocation of HLACF as at 28 May 2019



HLA Cash Fund (HLACF)

Historical Performance



	YTD	1 month	1 Year	3 Years	5 Years	Since Inception
HLACF	1.24%	0.25%	2.96%	8.94%	15.24%	22.72%
Benchmark*	1.34%	0.23%	3.26%	9.77%	17.15%	29.68%
Relative	-0.11%	0.01%	-0.30%	-0.83%	-1.91%	-6.96%

*Source: Bloomberg

Actual Annual Investment Returns for the Past Eight (8) Calendar Years

Year	2011	2012	2013	2014	2015	2016	2017	2018
Benchmark	3.0%	3.0%	3.0%	3.1%	3.2%	3.1%	3.0%	3.3%
HLACF- Gross	1.1%	2.8%	2.6%	3.4%	3.3%	3.4%	3.4%	3.5%
HLACF - Net	0.8%	2.3%	2.1%	2.9%	2.8%	2.9%	2.9%	3.0%

Net returns are adjusted for tax and fund management fees.

Those are the actual returns in the past eight (8) years, or since inception if shorter, and are strictly the performance of the investment-linked fund. Thus, the returns are not earned on the actual premium paid of the investment-linked product.

Investment Risks

All investments carry risks. Policy Owners must be prepared to accept certain degree of risk associated with this Investment. The following are the non-exhaustive list of risks associated to this fund.

1. Counterparty risk

This refers to the possibility that the institution that the fund invested in may not be able to make the required interest payment and repayment of principal.

Risk Management

The Company has in place its Authorized Investment Framework which forms part of the Risk Management process. The authority framework will cover the nature and scope of the investment authority that is exercisable by various parties in managing the Company's investments. Besides this, sensitivity and stress testing is conducted to inform the Company's management the profit & loss profiles of their investments under different pre-defined risk scenarios and the necessary action to be taken if the potential losses exceed the Company's risk tolerance level.

Basis of Unit Valuation

- The assets of every fund are to be valued to determine the value at which units of a particular fund can be liquidated or purchased for investment purposes.
- The unit price of a unit of a fund shall be determined by the Company but in any event shall not be less than the value of fund of the relevant fund (as defined below), divided by the number of units of the given fund in issue on the business day before the valuation date, and the result adjusted to the nearest one hundredth of a cent.
- The maximum value of any asset of any fund shall not exceed the following price:
 - The last transacted market price at which those assets could be purchased or sold on the business day before the valuation date; or
 - In the case of securities for which market values are not readily available, the price at which, in our Investment Manager's opinion, the asset may have been purchased on the business day before the valuation date;
plus any expenses which would have been incurred in its acquisition.
- To ensure fair treatment to all unit holders, the cost of acquiring and disposing of assets is recouped by making a transaction cost adjustment to the net asset value per unit.

HLA Cash Fund (HLACF)

Exceptional Circumstances

The Company reserves the right to defer the payment of benefits (other than death benefit) under this Policy for a period not exceeding six (6) months from the date the payment would have been normally effected if not for intervening events such as temporary closure of any Stock Exchange in which the fund is invested which the Company, in its discretion, may consider exceptional.

Basis of Calculation of Past Performance

The historical performance of the fund is calculated based on the price difference over the period in consideration compared to the older price of the period in consideration.

$$\frac{\text{Unit Price}_t - \text{Unit Price}_{t-1}}{\text{Unit Price}_{t-1}}$$

Others

HLA Cash Fund is managed by HLA. Any amount invested in this fund is invested by HLA on behalf of Policy Owner in money market instrument/s issued by licensed financial institution/s under the Islamic Financial Services Act 2013. The amount invested in this money market instrument/s is guaranteed by these financial institutions, before deducting any charge or tax. If the financial institutions issuing the money market instruments defaults or insolvent, the Policy Owner risks losing part or all of his/her amount that were invested into the instruments on their behalf by HLA.

THIS IS AN INSURANCE PRODUCT THAT IS TIED TO THE PERFORMANCE OF THE UNDERLYING ASSETS, AND IS NOT A PURE INVESTMENT PRODUCT SUCH AS UNIT TRUSTS.

Disclaimer:

Policy Owner must evaluate your options carefully and satisfy yourself that the investment-linked fund chosen meets your risk appetite. Past performance of the fund is not an indication of its future performance. The intention of this document is to enable Policy Owner to better understand the fund features and details in order to assist Policy Owner to making an informed decision. This document shall not be construed as professional advice on investment choices.