

HLA Venture Income Fund (HLAVIF)

March 2022

Fund Features

1. Investment Objective

The objective of the fund is to achieve high principal security and steady income by investing in fixed-income instruments. Returns will be comparable to prevailing interest rates but correspondingly, the risks will be significantly lower than that for equities investment.

2. Investment Strategy & Approach

This fund focuses on fixed income securities and money market instruments as well as benchmarked against Maybank's 3 months fixed deposit rate. This fund is suitable for investors who have low to moderate risk profile.

3. Asset Allocation

The fund will invest up to 100% of its NAV in fixed income instruments.

4. Target Market

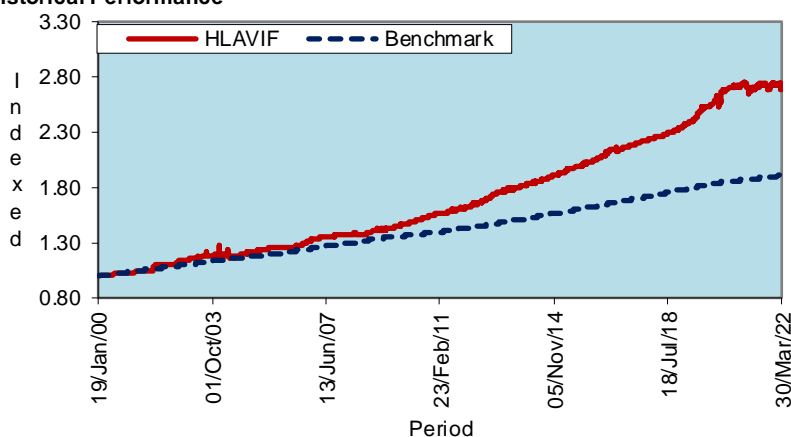
This fund is suitable for investors who have low to moderate risk profile

Fund Details

Unit Price (31/3/2022)	:RM2.7061
Fund Size (31/3/2022)	:RM497.1 mil
Fund Management Fee	: 0.50% p.a.
Fund Manager	:Hong Leong Assurance Berhad
Fund Category	:Bond
Fund Inception	:19 Jan 2000
Benchmark	:3-month Fixed Deposit Interest Rates
Frequency of Unit Valuation	:Daily

The Company reserves the right to change the Fund Management Fee (% p.a.) by giving the Policy Owner ninety (90) days prior written notice.

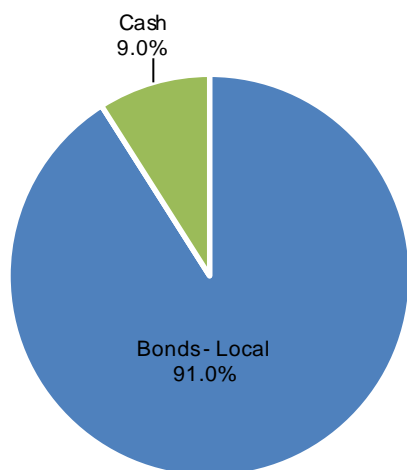
Historical Performance



	YTD	1 month	1 year	3 years	5 years	10 years	Since Inception
HLAVIF	-1.11%	-0.85%	1.21%	13.07%	24.79%	63.84%	170.61%
Benchmark*	0.42%	0.14%	1.71%	6.48%	13.30%	32.28%	90.77%
Relative	-1.53%	-1.00%	-0.50%	6.59%	11.49%	31.55%	79.84%

Notice: Past performance of the fund is not an indication of its future performance.

Asset Allocation of HLAVIF as at 31 March 2022



Top 5 Holdings for HLAVIF as at 31 Mar 2022

	%
1. M'SIAN GOVERNMENT SECURITIES 0	11.7
2. M'SIAN GOVERNMENT SECURITIES 1	11.3
3. M'SIAN INVESTMENT ISSUE 3	10.7
4. M'SIAN GOVERNMENT SECURITIES 1	9.1
5. MALAYSIA INVESTMENT ISSUE 1	8.1
Total Top 5	50.9

Hong Leong Assurance Berhad 198201014849 (94613-X)

Level 3, Tower B, PJ City Development, No. 15A, Jalan 219, Seksyen 51A, 46100 Petaling Jaya, Selangor.

Telephone 03-7650 1818 Facsimile 03-7650 1991

Customer Service Hotline 03-7650 1288 Customer Service Hotfax 03-7650 1299

HLA Venture Income Fund (HLAVIF)

Market Review

The bond market in March was by far, more influenced by potential policy measures to combat inflation as reflected by stark increases in global bond yields during the month. In the U.S. Treasury (UST) market, the 2-, 5-, 10- and 30-years yields increased by 90, 74, 51 and 29 bps m-o-m. We observed that yields began to climb ahead of the Fed meeting which saw the central bank raising the benchmark rate by 25bps. The hike seemed to do little in assuaging inflationary fears as sell down of the UST persisted, possibly exacerbated by February's CPI reading which came in at 7.9%, the highest in nearly 40 years. Yields also increased in response to the Chairman of the Federal Reserve's remarks that a more rapid response is required to fight inflationary pressures. These measures, which hinted at 50 basis point hikes, sparked more selling in the market and resulted in the inversion of the 5-year vs 10-year and 5-year vs 30-year UST rates for the first time since February 2006. The inverted yield curve is a warning sign of impending recession, heightening concerns that the Fed's hawkish stance to combat inflation could decelerate growth.

On the local front, govies yield mirrored the trend of its US counterpart albeit to a more moderate tune. Domestic yields did not react as strongly as the UST counterpart as the domestic economy has yet to mirror the overheating that is occurring in the US. The yields on the 3-, 5-, 10-, 15- and 30- tenors increased by 12, 11, 19, 17 and 14 bps m-o-m. Fundamentally, economic activities have continued to resume with little encumbrance and would likely continue to do so as daily infection cases have begun to recede from its peak in February. The recent announcement by EPF of a further RM10,000 withdrawal also raised some concerns on potential over supply in govies which sent rates up further.

Corporate bonds outperformed the govies in March with relatively benign yield movements and thin volume. Some prominent new issuances during the month are Kuala Lumpur Kepong Berhad (RM1.5 billion, AA1), Perbadanan Tabung Pendidikan Tinggi Nasional (RM1.5 billion million, GG) and Prasarana Malaysia Berhad (RM1.45 billion, GG).

Outlook & Strategy

We anticipate a market trend of increased recession fears, since aggressive Fed rate hikes could harm growth, potentially preventing rates from further climbing. The escalating crisis between Russia and Ukraine must be closely observed. Any further escalation might further disrupt the commodity supply chain, resulting in increased global inflation. This might reverse the present trend of rising UST rates and eventually result in a worldwide recession if the Fed acts more forcefully in containing inflation.

On the domestic front, the MGS will likely continue to track the movement in the UST market. The decline in daily Covid cases bodes well for the prospect of the economy. We will nevertheless be diligent in monitoring the public health landscape and related policy measures which could have an effect on the bond market, such as the EPF withdrawal schemes. We will continue to exercise caution and vigilance in our credit selection while waiting for a chance to reinvest in government securities if the market becomes oversold with cheaper valuation.

Actual Annual Investment Returns for the Past Ten (10) Calendar Years

Year	2012	2013	2014	2015	2016	2017	2018	2019	2020	2021
Benchmark	3.1%	3.1%	3.2%	3.2%	3.1%	3.0%	3.3%	3.0%	1.5%	1.7%
HLAVIF- Gross	10.0%	5.4%	5.8%	6.5%	6.9%	5.3%	5.6%	10.2%	9.0%	0.1%
HLAVIF - Net	8.7%	4.5%	4.8%	5.5%	5.8%	4.4%	4.6%	8.9%	7.8%	-0.4%

Net returns are adjusted for tax and fund management fees.

Those are the actual returns in the past ten (10) years, or since inception if shorter, and are strictly the performance of the investment-linked fund. Thus, the returns are not earned on the actual premium paid of the investment-linked product.

Notice: Past performance of the fund is not an indication of its future performance.

Investment Risks

All investments carry risks. Policy Owners must be prepared to accept certain degree of risk associated with this Investment. The following are the non-exhaustive list of risks associated to this fund.

1. Market Risk

Market risk stems from the fact that there are other economy-wide perils, which threaten all businesses. It is mainly caused by uncertainties in the economy, political and social environment.

2. Liquidity Risk

Liquidity risk is the risk that the fund invested cannot be readily sold and converted into cash. This may arise when the trading volume is low and/or where there is a lack of demand for the security.

3. Credit Risk

This refers to the possibility that the issuer of a security will not be able to make timely payments of interest or principal repayment on the maturity date. The default may lead to a fall in the value of the funds.

4. Interest Rate Risk

The level of interest rates has an impact on the value of investments. Any increase in rates will lead to a fall in the value of securities, thus affecting the value of the funds.

5. Country Risk

The foreign investment of a fund may be affected by the political & economic conditions of the country which the investments are made.

6. Currency Risk

This risk is associated with investments that are denominated in foreign currencies. Fluctuation in foreign exchange rates will have an impact on the value of the funds.

Risk Management

The company has in place its Authorized Investment Framework which forms part of the Risk Management process. The authority framework covers the nature and scope of the investment authority that is exercisable by various parties in managing the Company's investments. The potential investment risks that are taken into consideration in managing the fund include economic conditions, liquidity, qualitative and quantitative aspects of the securities. The investment manager(s) have put in place the following controls to reduce the risks through:

- having a flexible tactical asset allocation
- investing in a wide range of companies across different sectors
- setting prudent investment limits on various exposures
- taking into account the liquidity factor in selecting securities
- engaging in the hedging of foreign currency exposure where appropriate

HLA Venture Income Fund (HLAVIF)

Basis of Unit Valuation

1. The assets of every fund are to be valued to determine the value at which units of a particular fund can be liquidated or purchased for investment purposes.
2. The unit price of a unit of a fund shall be determined by the Company but in any event shall not be less than the value of fund of the relevant fund (as defined below), divided by the number of units of the given fund in issue on the business day before the valuation date, and the result adjusted to the nearest one hundredth of a cent.
3. The maximum value of any asset of any fund shall not exceed the following price:
 - (a) The last transacted market price at which those assets could be purchased or sold on the business day before the valuation date; or
 - (b) In the case of securities for which market values are not readily available, the price at which, in our Investment Manager's opinion, the asset may have been purchased on the business day before the valuation date; plus any expenses which would have been incurred in its acquisition.
4. To ensure fair treatment to all unit holders, the cost of acquiring and disposing of assets is recouped by making a transaction cost adjustment to the net asset value per unit.

Exceptional Circumstances

The Company reserves the right to defer the payment of benefits (other than death benefit) under this Policy for a period not exceeding six (6) months from the date the payment would have been normally effected if not for intervening events such as temporary closure of any Stock Exchange in which the fund is invested which the Company, in its discretion, may consider exceptional.

Basis of Calculation of Past Performance

The historical performance of the fund is calculated based on the price difference over the period in consideration compared to the older price of the period in consideration.

$$\frac{\text{Unit Price}_t - \text{Unit Price}_{t-1}}{\text{Unit Price}_{t-1}}$$

Others

HLA Venture Income Fund is managed by Hong Leong Assurance Berhad (HLA). Any amount invested in this fund is invested by HLA on behalf of Policy Owner in equity, fixed income, collective investment scheme, foreign asset, derivatives and money market instrument/s. If the financial institutions and/or corporations issuing the equity, fixed income, collective investment scheme, foreign asset, derivatives and money market instruments defaults or insolvent, the Policy Owner risks losing part or all of his/her amount that were invested into the instruments on his/her behalf by HLA.

THIS IS AN INSURANCE PRODUCT THAT IS TIED TO THE PERFORMANCE OF THE UNDERLYING ASSETS, AND IS NOT A PURE INVESTMENT PRODUCT SUCH AS UNIT TRUSTS.

Disclaimer:

Policy Owner must evaluate your options carefully and satisfy yourself that the investment-linked fund chosen meets your risk appetite. Past performance of the fund is not an indication of its future performance. The intention of this document is to enable Policy Owner to better understand the fund features and details in order to assist Policy Owner to making an informed decision. This document shall not be construed as professional advice on investment choices.