

# HLA Secure Fund (HLASF)

Nov 2019

## Fund Features

### 1. Investment Objective

To provide investors with steady and consistent return over a long-term investment horizon by investing into local and global fixed income securities and equities.

### 2. Investment Strategy & Approach

The strategy is to provide investors an affordable access into a diversified investment portfolio with a mixture of equities and fixed income instrument. The fund will invest primarily in fixed income instruments such as bonds, money market instruments, repo and deposits with financial institutions that provide regular income as well as in high dividend yield stocks to enhance the fund's returns. The asset allocation decision between fixed income instruments and equity is decided after considering the fixed income and equity market outlook over the medium to long-term horizon. Initially the fund will invest by feeding into Affin Hwang Select Income Fund ("Target Fund"), with the option to increase the number of funds or replace Affin Hwang Select Income Fund with other fund(s) in future.

### 3. Asset Allocation

The fund shall invest a minimum 70% of the NAV in Fixed Income Instruments and maximum 30% of NAV in equities.

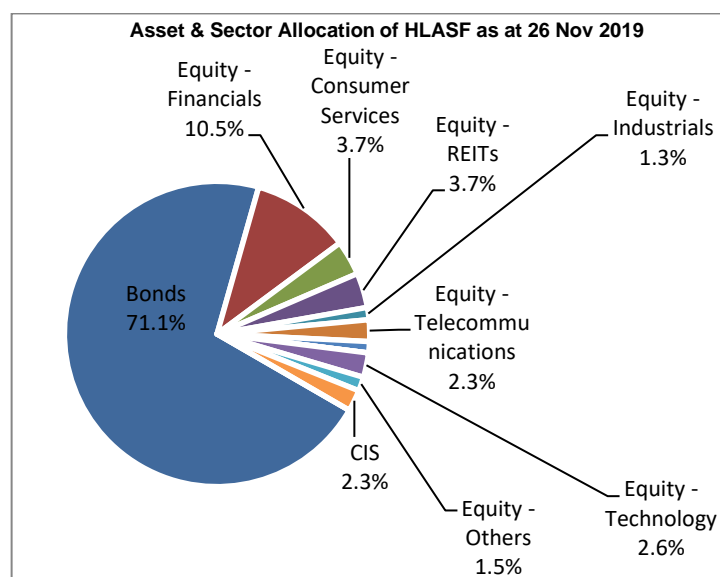
### 4. Target Market

The fund is suitable for investors who are relatively conservative and wish to have a steady and stable return that meets their retirement needs.

## Fund Details

Unit Price (26/11/2019)	:RM1.4222
Fund Size (26/11/2019)	:RM20.3mil
Fund Management Fee	:1.00% p.a.
Fund Manager	:Hong Leong Assurance Berhad
Fund Category	:Managed
Fund Inception	:05 Feb 2013
Benchmark	: (70% x Maybank 12 Months Fixed Deposit Rate) + (30% x Dow Jones Asia Pacific Select Dividend 30 Index)
Frequency of Unit Valuation	:Weekly

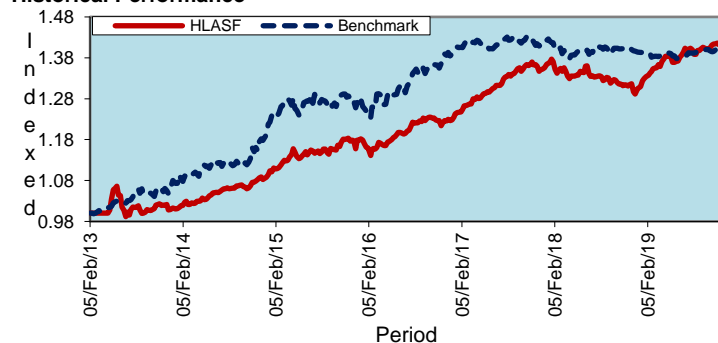
Fund management charge of underlying Collective Investment Scheme(s) is part of Fund Management Fee as stated in table above. There are no additional charges being charged to the Policy Owner. The Company reserves the right to change the Fund Management Fee (% p.a.) by giving the Policy Owner ninety (90) days prior written notice.



## Top 5 Holdings for HLASF as at 26 Nov 2019

		%
1.	China Construction Bank Corp	Equity 2.6
2.	United States Treasury	FI 2.4
3.	Ping An Insurance Grp Co China	Equity 2.1
4.	Hong Kong Exchange & Clearing	Equity 1.7
5.	AIA Group Ltd	Equity 1.7
<b>Total Top 5</b>		<b>10.5</b>

## Historical Performance



	YTD	1 month	1 Year	3 Years	5 Years	Since Inception
HLASF	8.98%	0.54%	8.14%	15.97%	31.37%	42.22%
Benchmark*	-0.07%	-0.44%	-0.78%	0.26%	20.84%	39.33%
Relative	9.05%	0.97%	8.92%	15.72%	10.53%	2.89%

\*Source: AffinHwang

## Market Review, Outlook & Strategy relevant to Target Fund

Markets were generally mixed over the month, driven by news flows and sentiment around a potential 'phase one' trade deal between the US and China. US reported a stronger-than-expected 3Q2019 GDP print which came in at 2.1% vs estimates of 1.9%. Other data points also showed upside surprises including inventory investment, durable goods and capital goods order, as well as jobless claim. Asian equities started the month strong on trade optimism, but sputtered towards the end as markets assessed the potential impact the Hong Kong Human Right bill would have on ongoing US-China trade negotiations. The Hong Kong Hang Seng index edged 2.1% lower, whilst the MSCI Asia ex-Japan index was barely unchanged at 0.2%. Latest manufacturing PMI reading rose beyond the 50 threshold for the first time since April 2019. Though on the flipside, industrial production numbers have continued to remain soft. China's central bank lowered its new lending reference rate in an effort to bolster its economy and boost growth. A Chinese state-owned commodity firm made headlines after it defaulted on its offshore dollar bonds, suggesting that central government support for state-owned enterprises are becoming increasingly selective and limited amid a slowing economy.

Markets are hopeful that the US and China would come to a landing and reach a phase-one trade deal by the end of the year. Despite drawing its ire, China is expected to give a measured response with both leaders incentivised to reach a deal with global trade on top of its agenda. China had revealed that it would raise penalties on violations of intellectual property rights to address one of the most contentious points in the ongoing trade dispute. Both sides are incentivised to broker a deal with the two economies having been battered by a protracted trade war. On outlook for Asia, economic indicators point to signs of bottoming-out with marginal improvement seen in data especially after several round of rate cuts by central banks. Fiscal stimulus through tax cuts in certain countries could also lend a boost to corporate earnings growth. There could be room for further market upside, as the economic cycle finds its footing again and gradually recover. Asia stands to benefit the most from this economic upcycle as the global manufacturing hub and a US dollar softening environment.

**Hong Leong Assurance Berhad** 198201014849 (94613-X)

Level 3, Tower B, PJ City Development, No. 15A, Jalan 219, Seksyen 51A, 46100 Petaling Jaya, Selangor.

Telephone 03-7650 1818 Facsimile 03-7650 1991

Customer Service Hotline 03-7650 1288 Customer Service Hotfax 03-7650 12991

## HLA Secure Fund (HLASF)

### Actual Annual Investment Returns for the Past Six (6) Calendar Years

Year	2013	2014	2015	2016	2017	2018
<b>Benchmark</b>	7.2%	10.4%	7.7%	8.2%	2.6%	-2.2%
<b>HLASF - Gross</b>	2.5%	9.2%	10.2%	5.6%	12.4%	-3.0%
<b>HLASF - Net</b>	1.3%	7.5%	8.4%	4.1%	10.4%	-3.7%

Net returns are adjusted for tax and fund management fees.

Those are the actual returns in the past six (6) years, or since inception if shorter, and are strictly the performance of the investment-linked fund. Thus, the returns are not earned on the actual premium paid of the investment-linked product.

The fund was only launched on 14 February 2013. The actual investment returns are calculated based on unit price from 14 February 2013 to 31 December 2013.

### Investment Risks

All investments carry risks. Policy Owners must be prepared to accept certain degree of risk associated with this Investment. The following are the non-exhaustive list of risks associated to this fund.

#### 1. Market Risk

Market risk stems from the fact that there are other economy-wide perils, which threaten all businesses. It is mainly caused by uncertainties in the economy, political and social environment.

#### 2. Liquidity Risk

Liquidity risk is the risk that the fund invested cannot be readily sold and converted into cash. This may arise when the trading volume is low and/or where there is a lack of demand for the security.

#### 3. Country Risk

The foreign investment of a fund may be affected by the political & economic conditions of the country which the investments are made.

#### 4. Currency Risk

This risk is associated with investments that are denominated in foreign currencies. Fluctuation in foreign exchange rates will have an impact on the value of the funds.

#### 5. Concentration Risk

This risk is associated with a feeder fund whereby the investments of such fund are not diversified. A feeder fund invests mainly into another collective investment scheme.

### Risk Management

The Company has in place its Authorized Investment Framework which forms part of the Risk Management process. The authority framework will cover the nature and scope of the investment authority that is exercisable by various parties in managing the Company's investments. Besides this, sensitivity and stress testing is conducted to inform the Company's management the profit & loss profiles of their investments under different pre-defined risk scenarios and the necessary action to be taken if the potential losses exceed the Company's risk tolerance level.

### Basis of Unit Valuation

- The assets of every fund are to be valued to determine the value at which units of a particular fund can be liquidated or purchased for investment purposes.
- The unit price of a unit of a fund shall be determined by the Company but in any event shall not be less than the value of fund of the relevant fund (as defined below), divided by the number of units of the given fund in issue on the business day before the valuation date, and the result adjusted to the nearest one hundredth of a cent.
- The maximum value of any asset of any fund shall not exceed the following price:
  - The last transacted market price at which those assets could be purchased or sold on the business day before the valuation date; or
  - In the case of securities for which market values are not readily available, the price at which, in our Investment Manager's opinion, the asset may have been purchased on the business day before the valuation date; plus any expenses which would have been incurred in its acquisition.
- To ensure fair treatment to all unit holders, the cost of acquiring and disposing of assets is recouped by making a transaction cost adjustment to the net asset value per unit.

### Exceptional Circumstances

The Company reserves the right to defer the payment of benefits (other than death benefit) under this Policy for a period not exceeding six (6) months from the date the payment would have been normally effected if not for intervening events such as temporary closure of any Stock Exchange in which the fund is invested which the Company, in its discretion, may consider exceptional.

### Target Fund Details

Affin Hwang Select Income Fund is a Bond fund managed by Affin Hwang Investment Management. The past performance of this fund is as follows:

Year	2009	2010	2011	2012	2013	2014	2015	2016	2017	2018
<b>Performance</b>	19.4%	9.3%	5.6%	15.1%	2.9%	6.9%	8.6%	4.1%	10.5%	-4.2%

Source: Affin Hwang Investment Management

### Basis of Calculation of Past Performance

The historical performance of the fund is calculated based on the price difference over the period in consideration compared to the older price of the period in consideration.

$$\frac{\text{Unit Price}_t - \text{Unit Price}_{t-1}}{\text{Unit Price}_{t-1}}$$

For the underlying Target Fund, past performance is calculated after adjusting for distribution and/or additional units, if any.

## HLA Secure Fund (HLASF)

### **Others**

HLA Secure Fund is managed by Hong Leong Assurance Berhad (HLA). Any amount invested in this fund is invested by HLA on behalf of Policy Owner in equity, fixed income, collective investment scheme, foreign asset, derivatives and money market instrument/s. If the financial institutions and/or corporations issuing the equity, fixed income, collective investment scheme, foreign asset, derivatives and money market instruments defaults or insolvent, the Policy Owner risks losing part or all of his/her amount that were invested into the instruments on his/her behalf by HLA.

**THIS IS AN INSURANCE PRODUCT THAT IS TIED TO THE PERFORMANCE OF THE UNDERLYING ASSETS, AND IS NOT A PURE INVESTMENT PRODUCT SUCH AS UNIT TRUSTS.**

### **Disclaimer:**

Policy Owner must evaluate your options carefully and satisfy yourself that the investment-linked fund chosen meets your risk appetite. Past performance of the fund is not an indication of its future performance. The intention of this document is to enable Policy Owner to better understand the fund features and details in order to assist Policy Owner to making an informed decision. This document shall not be construed as professional advice on investment choices.