

HLA Balanced Fund (HLABF)

March 2023

Fund Features

1. Investment Objective

This fund aims to achieve consistent capital growth over the medium-to-long term by investing in a diversified investment portfolio containing a balanced mixture of equities and fixed income securities.

2. Investment Strategy & Approach

HLABF will principally feed into third party collective investment schemes that meet the fund's objective. HLABF may also invest directly in a diversified portfolio of domestic and/or foreign assets including equities, equity-related securities, deposits or any other financial instruments that offer potential capital appreciation.

At inception, the fund will invest by feeding into Hong Leong Balanced Fund ("Target Fund"), with the option to increase the number of funds or replace the Target Fund in future.

The Target Fund invests in equity securities of companies operating in Malaysia. Generally, companies that have low shareholders' risk, strong balance sheets with strong operating cash flows and sustainable earnings, and low relative valuations represented by reasonable price earnings ratio (PER) or price-to-book ratios (P/B) are selected. The manager combines a "top-down" asset and sector allocation analysis with a "bottom-up" stock selection process for the equity portion of the fund. For the fixed income portion of the Target Fund, the manager maintains fundamental and active management of the Target Fund, where investment decisions are made in accordance to future projections of interest rates, return on investments and access to liquidity.

3. Asset Allocation

The Target Fund will invest a minimum of 40% and maximum of 60% of its NAV in equities. The balance of its NAV will be invested in fixed income securities and money market instruments.

4. Target Market

This fund is suitable for investors have conservative to moderate risk-reward temperament and have a medium-to-long term investment horizon.

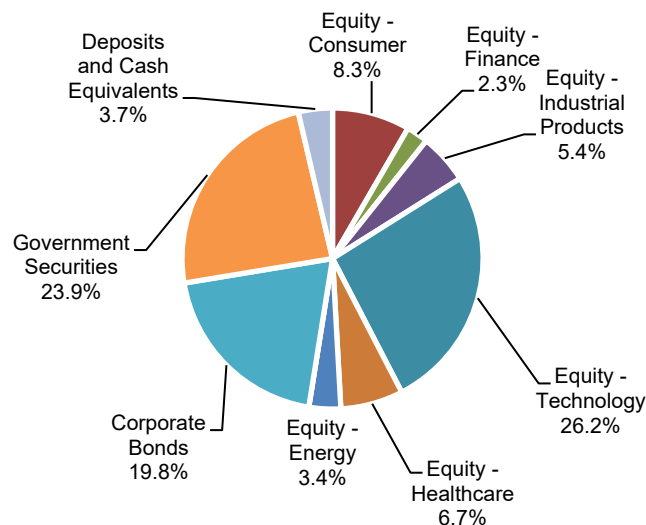
Fund Details

Unit Price (31/3/2023)	: RM1.0413
Fund Size (31/3/2023)	: RM472,280
Fund Management Fee	: 1.30%
Fund Manager	: Hong Leong Assurance Berhad
Fund Inception	: 27 April 2022
Benchmark	: (60% x FTSE Bursa Malaysia KLCI Index (FMB KLCI) + (40% x 3-month KLIBOR)
Frequency of Unit Valuation	: Daily

Fund management charge of underlying Collective Investment Scheme(s) is part of Fund Management Fee as stated in table above. There are no additional charges being charged to the Policy Owner. The Company reserves the right to change the Fund Management Fee (% p.a.) by giving the Policy Owner ninety (90) days prior written notice.

Asset Allocation for HLABF as at 31 st Mar 2023	%
Hong Leong Balanced Fund	98.93
Cash	1.07
Total	100.0

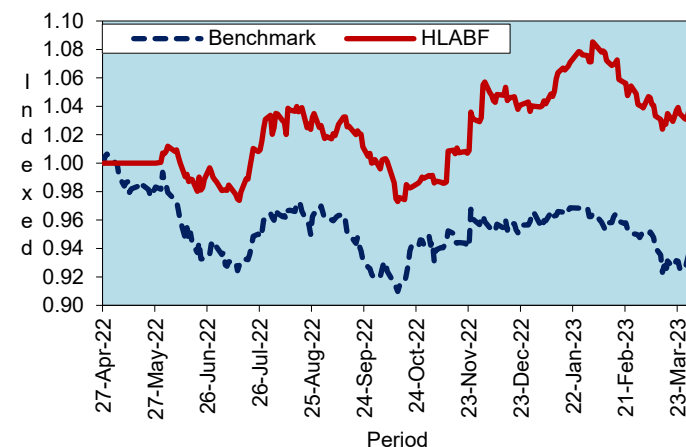
Asset & Sector Allocation of HLABF as at 31 March 2023



Top 5 Holdings for HLABF as at 31st Mar 2023

	%
1. Malaysian Government Securities 2028	6.5
2. Frontken Corporation Berhad	4.8
3. Pentamaster Corporation	4.8
4. D&O Green Technologies Berhad	4.3
5. UWC Berhad	3.6
Total Top 5	24.0

Historical Performance



	YTD	1 month	1 year	3 years	5 years	Since Inception
HLABF	0.12%	0.00%	-	-	-	4.13%
Benchmark*	-3.05%	-1.37%	-	-	-	-6.36%
Relative	3.16%	1.37%	-	-	-	10.49%

Notice: Past performance of the fund is not an indication of its future performance.

HLA Balanced Fund (HLABF)

Market Review, Outlook & Strategy

Equities

During the month, the FTSE BM KLCI declined 2.2% to close at 1,423 points. The broader market outperformed as the FTSE BM EMAS Index declined 1.5% to close at 10,420 points. Small caps outperformed as the FTSE BM Small Cap Index declined 1.1% to close at 15,260 points. The finance sector underperformed during the month as investors were concerned about the possible contagion effect following the collapse of Silicon Valley Bank and takeover of Credit Suisse. On the corporate front, KPJ Healthcare Berhad entered into a share sale agreement with PT Nusantara Medicalindo for the proposed disposal of its Indonesian hospital operations and facilities. Lembaga Tabung Haji issued a notice of conditional voluntary takeover offer to Boustead Holdings Berhad for the 40.58% stake it does not already own in the company at 85.5 sens.. The Fund will continue to invest in companies that would benefit from superior pricing power and efficient cost management.

Fixed Income

The month started off with news of Silicon Valley Bank collapse in the US resulting in US Federal Reserve (FED) facing tougher decisions going forward in terms of interest rate trajectory path. In Fed's latest decision, the Fed decided to raise its benchmark lending rate on March 2022, as it sought to strike a balance between curbing high inflation and averting further upheaval in the commercial banking sector. The quarter-point increase, which was in line with expectations, lifted the target range to 4.75-5.00 per cent at the end of a two-day policy meeting.

In the domestic fixed income space, sovereign bonds saw an overall risk-off month with thin trading. On a month-to-month basis, the Malaysia Government Securities (MGS) yield closed with the longer tenure MGS moving lower by 5-6 basis points (bps). In terms of government bond issuances, there was the opening of the 7-year Government Investment Issue for September 2030. The bid-to-cover ratio was lower than expected at 1.6x with average yield of 3.79%. In the primary market, YTL Power International Berhad with ratings of AA1 issued RM1.5 billion with four tenures of 3-year, 6-year, 7-year, and 10-year. TNB Power Generation Sendirian Berhad (AAA rated) issued RM2 billion of Sustainability Sukuk Wakalah bonds.

Fed officials now expect economic growth to be slightly slower this year and inflation slightly higher than they predicted in December. They also forecast raising interest rates to 5.1% by the end of 2023, before coming down to 4.3% by the end of 2024. The Fed is still focused on getting inflation down to its 2% goal.

Locally, consumer price index inflation eased lower in February with headline inflation edging down to 3.6% year-on-year from 3.7% in January. The decline in both headline and core consumer-price gains should help rein in inflation expectations. Bank Negara Malaysia (BNM) expects gross domestic product growth at a range of 4.0-5.0% in 2023 (CIMB: 4.0%) on the back of resilient domestic demand, supported by ongoing improvement in labour market conditions, implementation of multi-year investment projects and higher inbound tourism especially from China. We expect BNM to continue its pause in May to further take stock of the cumulative impact of the 100bps hikes delivered and another 25bps hike in July to 3.00% thereafter to anchor inflation.

In terms of portfolio strategy, we will continue to participate in primary auctions and high investment grade corporate primary bond issuances as well as in the secondary market when opportunity arises as we do see a healthy pipeline on primary issuances.

Investment Risks

All investments carry risks. Policy Owners must be prepared to accept certain degree of risk associated with this Investment. The following are the non-exhaustive list of risks associated to this fund.

1. Market Risk

Market risk stems from the fact that there are other economy-wide perils, which threaten all businesses. It is mainly caused by uncertainties in the economy, political and social environment.

2. Liquidity Risk

Defined as the ease with which a security can be sold at or near its fair value. This risk occurs in thinly traded or illiquid securities. Should the fund need to sell a relatively large amount of such securities, such action itself may significantly depress the selling price.

3. Credit Risk

This refers to the possibility that the issuer of a security will not be able to make timely payments of interest or principal repayment on the maturity date. The default may lead to a fall in the value of the funds.

4. Interest Rate Risk

The level of interest rates has an impact on the value of investments. Any increase in rates will lead to a fall in the value of securities, thus affecting the value of the funds.

5. Concentration Risk

Concentration risk occurs when a portfolio is overweight on a particular security, sector or asset class. As the fund invests mainly into third party collective investment scheme (CIS) and by virtue of the CIS investing in a diversified portfolio of equities as well as dynamic asset allocation strategy between equities and other financial securities, the concentration risk is mitigated.

6. Target Fund(s) Risk

The fund invests in third party CIS which is being managed by another fund manager. The CIS is carefully selected in order to ensure that the objectives of said CIS are appropriately aligned with the fund. Nevertheless, the Fund Manager does not have control over the management of the CIS and any adverse effect on the CIS will inevitably affect the fund. In such instance, the Fund Manager may replace the CIS with another CIS which the Fund Manager considers to be more appropriate or invest directly in a diversified portfolio in order to meet the objective of the fund. Please also refer to the Target Fund's prospectus for more detailed and comprehensive information on Target Fund specific risks.

If the fund invests in Foreign Assets, it will be exposed to the following risks:

7. Country Risk

The foreign investments made by the fund are subjected to risks specific to the country in which it invests. Such risks include changes in a country's economic fundamentals, social and political stability, currency movements, foreign investment policies and etc. The risk may be mitigated by closely monitoring the developments in the countries in order to identify any emerging risk.

8. Currency Risk

This risk applies to foreign investment, in which the investment may rise or fall due to fluctuation in the foreign currencies. Adverse movements in currencies exchange rates can result in a loss to the investment.

HLA Balanced Fund (HLABF)

Risk Management

The Company has in place its authorized investment framework which forms part of the Risk Management process. The authority framework covers the nature and scope of the investment authority that is exercisable by various parties in managing the Company's investments. The potential investment risks that are taken into consideration in managing the fund include economic conditions, liquidity, qualitative and quantitative aspects of the securities. The investment manager(s) have put in place the following controls to reduce the risks through:

- having a flexible tactical asset allocation
- investing in a wide range of companies across different sectors
- setting prudent investment limits on various exposures
- taking into account the liquidity factor in selecting securities
- engaging in the hedging of foreign currency exposure where appropriate

Basis of Unit Valuation

- The assets of every fund are to be valued to determine the value at which units of a particular fund can be liquidated or purchased for investment purposes.
- The unit price of a unit of a fund shall be determined by the Company but in any event shall not be less than the value of fund of the relevant fund (as defined below), divided by the number of units of the given fund in issue on the business day before the valuation date, and the result adjusted to the nearest one hundredth of a cent.
- The maximum value of any asset of any fund shall not exceed the following price:
 - The last transacted market price at which those assets could be purchased or sold on the business day before the valuation date; or
 - In the case of securities for which market values are not readily available, the price at which, in our Investment Manager's opinion, the asset may have been purchased on the business day before the valuation date; plus any expenses which would have been incurred in its acquisition.
- To ensure fair treatment to all unit holders, the cost of acquiring and disposing of assets is recouped by making a transaction cost adjustment to the net asset value per unit.

Exceptional Circumstances

The Company reserves the right to defer the payment of benefits (other than death benefit) under this Policy for a period not exceeding six (6) months from the date the payment would have been normally effected if not for intervening events such as temporary closure of any Stock Exchange in which the fund is invested which the Company, in its discretion, may consider exceptional.

Target Fund Details

Hong Leong Balanced Fund is a Balanced fund managed by Hong Leong Asset Management. The past performance of this fund is as follows:

Year	2013	2014	2015	2016	2017	2018	2019	2020	2021	2022
Performance	9.9%	1.1%	13.6%	1.1%	15.4%	-4.7%	14.0%	15.2%	11.1%	-9.9%

Source: Hong Leong Asset Management

Basis of Calculation of Past Performance

The historical performance of the fund is calculated based on the price difference over the period in consideration compared to the older price of the period in consideration.

$$\frac{\text{Unit Price}_t - \text{Unit Price}_{t-1}}{\text{Unit Price}_{t-1}}$$

For the underlying Target Fund, past performance is calculated after adjusting for distribution and/or additional units, if any.

Others

HLA Balanced Fund is managed by HLA. Any amount invested in this fund is invested by HLA on behalf of Policy Owner in equity, fixed income, collective investment scheme, foreign asset, derivatives and money market instrument/s. If the financial institutions and/or corporations issuing the equity, fixed income, collective investment scheme, foreign asset, derivatives and money market instruments defaults or becomes insolvent, the Policy Owner risks losing part or all of his/her amount that were invested into the instruments on his/her behalf by HLA.

THIS IS AN INSURANCE PRODUCT THAT IS TIED TO THE PERFORMANCE OF THE UNDERLYING ASSETS, AND IS NOT A PURE INVESTMENT PRODUCT SUCH AS UNIT TRUSTS.

Disclaimer:

Policy Owner must evaluate your options carefully and satisfy yourself that the investment-linked fund chosen meets your risk appetite. Past performance of the fund is not an indication of its future performance. The intention of this document is to enable Policy Owner to better understand the fund features and details in order to serve as a guide to the Policy Owner to making an informed decision. This document shall not be construed as professional advice on investment choices.