

HLA Secure Fund (HLASF)

April 2022

Fund Features

1. Investment Objective

To provide investors with steady and consistent return over a long-term investment horizon by investing into local and global fixed income securities and equities.

2. Investment Strategy & Approach

The strategy is to provide investors an affordable access into a diversified investment portfolio with a mixture of equities and fixed income instrument. The fund will invest primarily in fixed income instruments such as bonds, money market instruments, repo and deposits with financial institutions that provide regular income as well as in high dividend yield stocks to enhance the fund's returns. The asset allocation decision between fixed income instruments and equity is decided after considering the fixed income and equity market outlook over the medium to long-term horizon. Initially the fund will invest by feeding into Affin Hwang Select Income Fund ("Target Fund"), with the option to increase the number of funds or replace Affin Hwang Select Income Fund with other fund(s) in future. The Target Fund will invest primarily in Asia Pacific excluding Japan companies.

3. Asset Allocation

The fund shall invest a minimum 70% of the NAV in Fixed Income Instruments and maximum 30% of NAV in equities.

4. Target Market

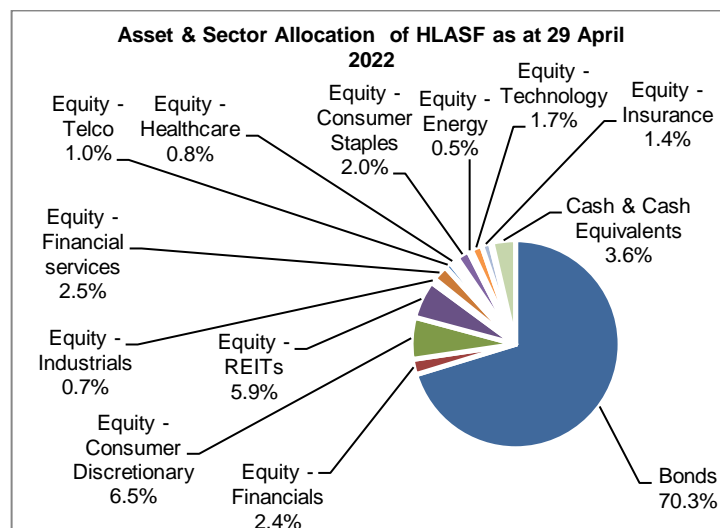
The fund is suitable for investors who are relatively conservative and wish to have a steady and stable return that meets their retirement needs.

Fund Details

Unit Price (29/4/2022)	:RM1.4679
Fund Size (29/4/2022)	:RM23.1 mil
Fund Management Fee	:1.00% p.a.
Fund Manager	:Hong Leong Assurance Berhad
Fund Category	:Managed
Fund Inception	:05 Feb 2013
Benchmark	: (70% x Maybank 12 Months Fixed Deposit Rate) + (30% x MSCI AC Asia Pacific excluding Japan High Dividend Yield Index)

Frequency of Unit Valuation :Daily

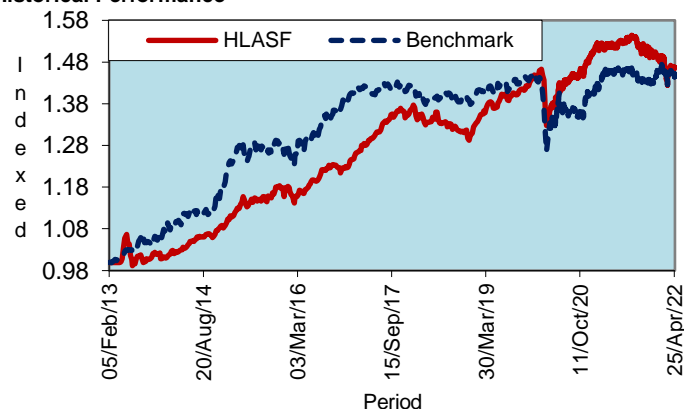
Fund management charge of underlying Collective Investment Scheme(s) is part of Fund Management Fee as stated in table above. There are no additional charges being charged to the Policy Owner. The Company reserves the right to change the Fund Management Fee (% p.a.) by giving the Policy Owner ninety (90) days prior written notice. With effect 27 April 2020, the frequency of unit valuation will be changed from weekly to daily.



Top 5 Holdings for HLASF as at 29 Apr 2022

		%
1.	MGS (22.05.2040)	FI 2.6
2.	Lafarge Cement Sdn Bhd	FI 2.0
3.	Mapletree North Asia Com Trust	Equity 2.0
4.	HSBC Holdings PLC	FI 1.8
5.	Parkway Pantai Ltd	FI 1.7
Total Top 5		10.1

Historical Performance



	YTD	1 month	1 Year	3 Years	5 Years	Since Inception
HLASF	-1.98%	0.20%	-3.19%	6.07%	13.99%	46.79%
Benchmark*	1.04%	-0.22%	0.04%	2.12%	2.69%	45.11%
Relative	-3.03%	0.42%	-3.22%	3.95%	11.30%	1.68%

*Source: AffinHwang

Notice: Past performance of the fund is not an indication of its future performance.

Benchmark*

Time Frame	Benchmark
Prior to March 2016	(70% x JP Morgan Asia Credit Investment Grade Index) + (30% x Dow Jones Asia Pacific Select Dividend 30 Index)
March 2016 to February 2022	(70% x Maybank 12 Months Fixed Deposit Rate) + (30% x Dow Jones Asia Pacific Select Dividend 30 Index)
February 2022 onwards	(70% x Maybank 12 Months Fixed Deposit Rate) + (30% x MSCI AC Asia Pacific excluding Japan High Dividend Yield Index)

Hong Leong Assurance Berhad 198201014849 (94613-X)

Level 3, Tower B, PJ City Development, No. 15A, Jalan 219, Seksyen 51A, 46100 Petaling Jaya, Selangor.

Telephone 03-7650 1818 Facsimile 03-7650 1991

Customer Service Hotline 03-7650 1288 Customer Service Hotfax 03-7650 12991

HLA Secure Fund (HLASF)

Market Review, Outlook & Strategy relevant to Target Fund

Global equities slid lower in April as markets were weighed down by concerns of a more aggressive monetary tightening by the US Federal Reserve (Fed) as well as disruptive lockdowns in China. The S&P 500 index fell 8.8% as Fed Chair Jerome Powell affirmed the central bank's hawkish pivot towards taming inflation with a 50 bps rate hike in the bag for its May'22 FOMC meeting.

In Asia, the broader MSCI Asia ex-Japan index fell 5.2% as COVID lockdowns in China continue to put a strain on regional supply chains and dim the outlook on growth. The MSCI China index closed 3.9% lower in April. Against a backdrop of a domestic slowdown and rising US rates, the Renminbi fell to a one-year low against the greenback last month. Policy divergence between an aggressive Fed and an accommodative People's Bank of China (PBoC) is putting pressure on the Renminbi. Other Asian currencies which are closely correlated to China could also depreciate in tandem. This includes the Ringgit which extended losses in the month pushing past 4.32 against the US Dollar

On the domestic front, the benchmark KLCI edged 0.8% higher buoyed by optimism surrounding economic reopening as COVID restrictions are eased. These include easing of testing requirements for inbound travellers, MySejahtera check-ins, as well as mask mandates. This could lay down the planks for a more sustainable recovery with further evidence pointing to the endemic stage of COVID. The plantation sector also got a lift following an announcement by Indonesia to temporarily ban palm oil export. With supply from Indonesia which accounts for approximately 60.0% of global palm oil exports now temporarily sealed, demand could shift to Malaysia-based planters to fill-in the gap left behind.

On local fixed income, the 10-year MGS yield rose 50 bps to end the month at 4.36% as the bond market endured a softer session on the back of a rising global interest rate environment. Bank Negara Malaysia (BNM) revised its forecast for Malaysia's GDP growth in 2022 to a new range of 5.3-6.3% (a shade lower from the previous 5.5-6.5% projection). BNM attributed the revision to downside risks from the recent Omicron wave, supply-side disruptions, as well as ongoing geopolitical conflicts on the global front. In addition, the central bank also highlighted that inflation should remain manageable although it is expected to trend slightly higher on average. BNM's latest forecast for inflation is now at 2.2-3.2% (as compared to 2.0-3.0% previously). Core inflation is also expected to trend slightly higher, but will remain contained due to price control measures.

Actual Annual Investment Returns for the Past Eight (8) Calendar Years

Year	2013	2014	2015	2016	2017	2018	2019	2020	2021
Benchmark	7.2%	10.4%	7.7%	8.2%	2.6%	-2.2%	-0.2%	-3.1%	2.2%
HLASF - Gross	2.5%	9.2%	10.2%	5.6%	12.4%	-3.0%	12.3%	6.0%	0.7%
HLASF - Net	1.3%	7.5%	8.4%	4.1%	10.4%	-3.7%	10.4%	4.5%	-0.3%

Net returns are adjusted for tax and fund management fees.

Those are the actual returns in the past eight (8) years, or since inception if shorter, and are strictly the performance of the investment-linked fund. Thus, the returns are not earned on the actual premium paid of the investment-linked product.

Notice: Past performance of the fund is not an indication of its future performance.

The fund was only launched on 14 February 2013. The actual investment returns are calculated based on unit price from 14 February 2013 to 31 December 2013.

Investment Risks

All investments carry risks. Policy Owners must be prepared to accept certain degree of risk associated with this Investment. The following are the non-exhaustive list of risks associated to this fund.

1. Market Risk

Market risk stems from the fact that there are other economy-wide perils, which threaten all businesses. It is mainly caused by uncertainties in the economy, political and social environment.

2. Liquidity Risk

Liquidity risk is the risk that the fund invested cannot be readily sold and converted into cash. This may arise when the trading volume is low and/or where there is a lack of demand for the security.

3. Country Risk

The foreign investment of a fund may be affected by the political & economic conditions of the country which the investments are made.

4. Currency Risk

This risk is associated with investments that are denominated in foreign currencies. Fluctuation in foreign exchange rates will have an impact on the value of the funds.

5. Concentration Risk

This risk is associated with a feeder fund whereby the investments of such fund are not diversified. A feeder fund invests mainly into another collective investment scheme.

Risk Management

The company has in place its Authorized Investment Framework which forms part of the Risk Management process. The authority framework covers the nature and scope of the investment authority that is exercisable by various parties in managing the Company's investments. The potential investment risks that are taken into consideration in managing the fund include economic conditions, liquidity, qualitative and quantitative aspects of the securities. The investment manager(s) have put in place the following controls to reduce the risks through:

- having a flexible tactical asset allocation
- investing in a wide range of companies across different sectors
- setting prudent investment limits on various exposures
- taking into account the liquidity factor in selecting securities
- engaging in the hedging of foreign currency exposure where appropriate

HLA Secure Fund (HLASF)

Basis of Unit Valuation

1. The assets of every fund are to be valued to determine the value at which units of a particular fund can be liquidated or purchased for investment purposes.
2. The unit price of a unit of a fund shall be determined by the Company but in any event shall not be less than the value of fund of the relevant fund (as defined below), divided by the number of units of the given fund in issue on the business day before the valuation date, and the result adjusted to the nearest one hundredth of a cent.
3. The maximum value of any asset of any fund shall not exceed the following price:
 - a) The last transacted market price at which those assets could be purchased or sold on the business day before the valuation date; or
 - b) In the case of securities for which market values are not readily available, the price at which, in our Investment Manager's opinion, the asset may have been purchased on the business day before the valuation date; plus any expenses which would have been incurred in its acquisition.
4. To ensure fair treatment to all unit holders, the cost of acquiring and disposing of assets is recouped by making a transaction cost adjustment to the net asset value per unit.

Exceptional Circumstances

The Company reserves the right to defer the payment of benefits (other than death benefit) under this Policy for a period not exceeding six (6) months from the date the payment would have been normally effected if not for intervening events such as temporary closure of any Stock Exchange in which the fund is invested which the Company, in its discretion, may consider exceptional.

Target Fund Details

Affin Hwang Select Income Fund is a Bond fund managed by Affin Hwang Investment Management. The past performance of this fund is as follows:

Year	2011	2012	2013	2014	2015	2016	2017	2018	2019	2020	2021
Performance	5.6%	15.1%	2.9%	6.9%	8.6%	4.1%	10.5%	-4.2%	10.0%	4.7%	-0.8%

Source: Affin Hwang Investment Management

Basis of Calculation of Past Performance

The historical performance of the fund is calculated based on the price difference over the period in consideration compared to the older price of the period in consideration.

$$\frac{\text{Unit Price}_t - \text{Unit Price}_{t-1}}{\text{Unit Price}_{t-1}}$$

For the underlying Target Fund, past performance is calculated after adjusting for distribution and/or additional units, if any.

Others

HLA Secure Fund is managed by Hong Leong Assurance Berhad (HLA). Any amount invested in this fund is invested by HLA on behalf of Policy Owner in equity, fixed income, collective investment scheme, foreign asset, derivatives and money market instrument/s. If the financial institutions and/or corporations issuing the equity, fixed income, collective investment scheme, foreign asset, derivatives and money market instruments defaults or insolvent, the Policy Owner risks losing part or all of his/her amount that were invested into the instruments on his/her behalf by HLA.

THIS IS AN INSURANCE PRODUCT THAT IS TIED TO THE PERFORMANCE OF THE UNDERLYING ASSETS, AND IS NOT A PURE INVESTMENT PRODUCT SUCH AS UNIT TRUSTS.

Disclaimer:

Policy Owner must evaluate your options carefully and satisfy yourself that the investment-linked fund chosen meets your risk appetite. Past performance of the fund is not an indication of its future performance. The intention of this document is to enable Policy Owner to better understand the fund features and details in order to assist Policy Owner to making an informed decision. This document shall not be construed as professional advice on investment choices.